

IL33 (aa165-178) Antibody (internal region)
Peptide-affinity purified goat antibody
Catalog # AF3957a**Specification**

IL33 (aa165-178) Antibody (internal region) - Product Information

Application	WB, E
Primary Accession	O95760
Other Accession	NP_254274.1 , NP_001186569.1 , NP_001186570.1 , 90865
Reactivity	Human
Host	Goat
Clonality	Polyclonal
Concentration	0.5 mg/ml
Isotype	IgG
Calculated MW	30759

IL33 (aa165-178) Antibody (internal region) - Additional Information**Gene ID** 90865**Other Names**

Interleukin-33, IL-33, Interleukin-1 family member 11, IL-1F11, Nuclear factor from high endothelial venules, NF-HEV, Interleukin-33 (95-270), Interleukin-33 (99-270), Interleukin-33 (109-270), IL33, C9orf26, IL1F11, NFHEV

Dilution

WB~~1:1000

E~~N/A

Format

0.5 mg/ml in Tris saline, 0.02% sodium azide, pH7.3 with 0.5% bovine serum albumin

Storage

Maintain refrigerated at 2-8°C for up to 6 months. For long term storage store at -20°C in small aliquots to prevent freeze-thaw cycles.

Precautions

IL33 (aa165-178) Antibody (internal region) is for research use only and not for use in diagnostic or therapeutic procedures.

IL33 (aa165-178) Antibody (internal region) - Protein Information**Name** IL33 ([HGNC:16028](#))**Synonyms** C9orf26, IL1F11, NFHEV

Function

Cytokine that binds to and signals through the IL1RL1/ST2 receptor which in turn activates NF-kappa-B and MAPK signaling pathways in target cells (PubMed:16286016, PubMed:19841166). Involved in the maturation of Th2 cells inducing the secretion of T-helper type 2- associated cytokines (PubMed:17853410, PubMed:18836528). Also involved in activation of mast cells, basophils, eosinophils and natural killer cells (PubMed:17853410, PubMed:18836528). Acts as an enhancer of polarization of alternatively activated macrophages (PubMed:19841166). Acts as a chemoattractant for Th2 cells, and may function as an 'alarmin', that amplifies immune responses during tissue injury (PubMed:17853410, PubMed:18836528). Induces rapid UCP2-dependent mitochondrial rewiring that attenuates the generation of reactive oxygen species and preserves the integrity of Krebs cycle required for persistent production of itaconate and subsequent GATA3-dependent differentiation of inflammation-resolving alternatively activated macrophages (By similarity).

Cellular Location

Nucleus. Chromosome. Cytoplasm Cytoplasmic vesicle, secretory vesicle Secreted Note=Secreted and released in the extracellular milieu by passing through the gasdermin-D (GSDMD) pore following cleavage by CELA1 (PubMed:35794369). Associates with heterochromatin and mitotic chromosomes (PubMed:17185418). The secretion is dependent on protein unfolding and facilitated by the cargo receptor TMED10; it results in protein translocation from the cytoplasm into the ERGIC (endoplasmic reticulum-Golgi intermediate compartment) followed by vesicle entry and secretion (PubMed:32272059).

Tissue Location

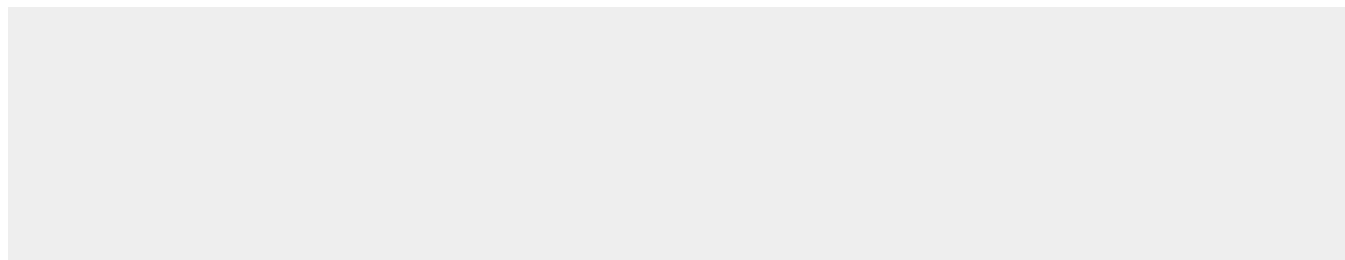
Expressed at high level in high endothelial venules found in tonsils, Peyer patches and mesenteric lymph nodes. Almost undetectable in placenta.

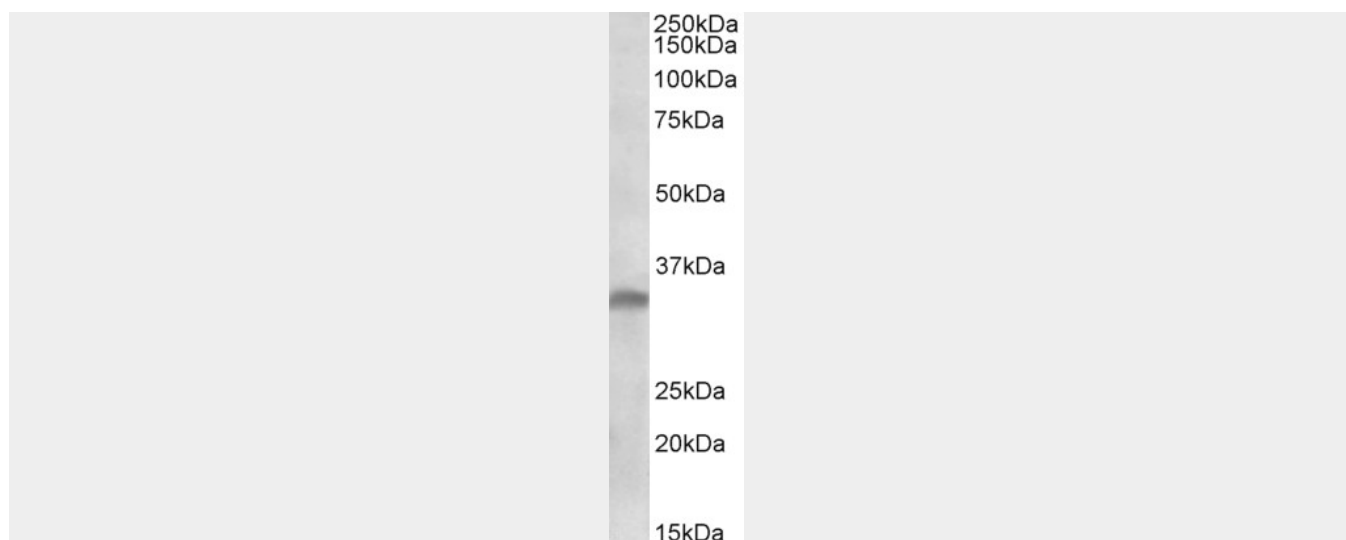
IL33 (aa165-178) Antibody (internal region) - Protocols

Provided below are standard protocols that you may find useful for product applications.

- [Western Blot](#)
- [Blocking Peptides](#)
- [Dot Blot](#)
- [Immunohistochemistry](#)
- [Immunofluorescence](#)
- [Immunoprecipitation](#)
- [Flow Cytometry](#)
- [Cell Culture](#)

IL33 (aa165-178) Antibody (internal region) - Images





AF3957a (1 µg/ml) staining of Jurkat lysate (35 µg protein in RIPA buffer). Primary incubation was 1 hour. Detected by chemiluminescence.

IL33 (aa165-178) Antibody (internal region) - Background

This antibody is expected to recognize all reported isoforms (NP_254274.1; NP_001186569.1; NP_001186570.1).

IL33 (aa165-178) Antibody (internal region) - References

ST2 and IL-33 in pregnancy and pre-eclampsia. Granne I, Southcombe JH, Snider JV, Tannetta DS, Child T, Redman CW, Sargent IL. PLoS One. 2011;6(9):e24463. PMID: 21949719